

POTABLE WATER



Dusenflo® Gravity Filter

*A final step towards achieving
springlike water*



JOHN MEUNIER

DUSENFLO® FILTER

For nearly 50 years, John Meunier Inc. has developed an expertise second to none in water and wastewater treatment. Among the numerous processes that the company offers to meet various treatment objectives, the Dusenflo® gravity filter has proven to be an efficient and reliable filtration system. The Dusenflo® filter offers a unique, economical and highly effective potable water filtration system that will provide consistent high quality, crystal clear potable water.

FEATURES

The Dusenflo® filter makes use of the most advanced known technology for achieving high rate filtration at minimum cost. The filter can be adapted to any water condition of turbidity, colour or odour. The Dusenflo® filter makes use of a number of well-proven techniques to achieve these objectives:

- An underdrain system equipped with specially designed nozzles which allow efficient and economical air and water backwashing of the filter;
- Filter media, uniform or mixed bed, selected and sized to suit specific raw and effluent conditions;
- Valving and controls to suit the customers needs, from simple manual controls to complete automation and remote monitoring.



CHARACTERISTICS

The Dusenflo® filter is keeping pace with all known filtration technologies.

• **Economy**

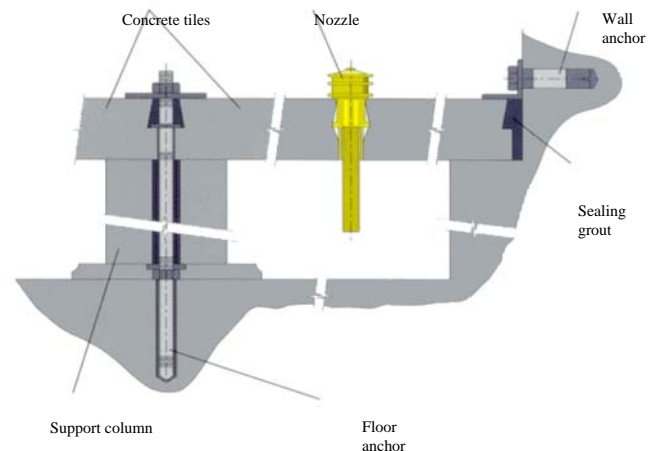
Backwashing with air and water, with the specially designed underdrain nozzles, ensures a perfectly clean filter media between cycles and reduces the required number of backwash cycles. This contributes to important savings in power and treated water consumption.

• **Adaptability**

A wide selection of media and underdrain nozzles are available and selected according to the specific treatment requirements of given water. The filter underdrain is designed to provide optimum hydraulic distribution across the filter surface while retaining the finest media particle.

• **Water quality**

The Dusenflo® filter will consistently provide a high quality of filtered water for all water conditions. The filter is particularly effective at removing Giardia and Cryptosporidium cysts.



HOW DOES IT WORK

The Dusenflo® filter can be furnished with a homogeneous media, normally sand, or with a mixed bed media such as sand, anthracite or activated carbon. Water percolates downwards through the media at a flow rate of up to 30m/h (12 usgpm/sq.ft.).

Uniform bed media:

The uniform bed media consists of fine sand having an effective size of 0.9 mm. With a homogeneous media, the filter retains particulate matter progressively in depth in the media mass instead of in the layers only. Cleaning a homogeneous bed filter requires air and water simultaneous backwashing.

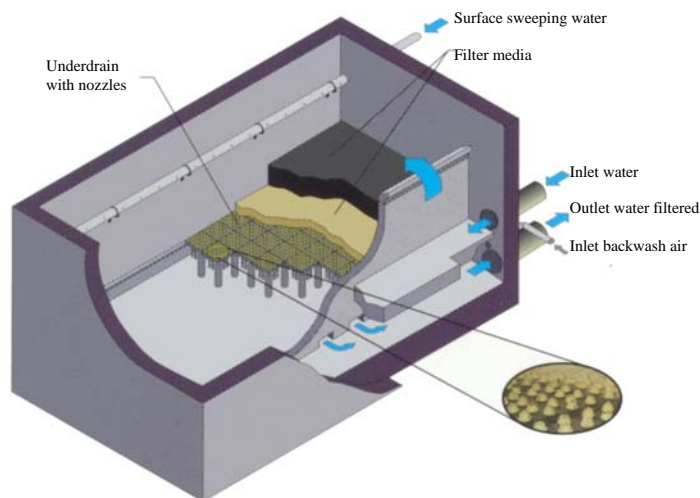
Mixed bed media:

Mixed bed filter are normally used when a fine media is required. The mixed bed media normally consists of a layer of fine sand, which supports an upper layer of larger particles such as anthracite. To avoid carryover of anthracite during backwashing, air backwashing or fluidizing will alternate with water backwashing according to a defined flow rate and sequence.

The underdrain system:

A specially designed underdrain system allows the introduction of air and water to fluidize and scour the complete filter bed. Backwash air is used to vigorously stir and vibrate the media particles while backwash water expands the filter bed. Individual grains of media collide with each other, resulting in a scrubbing action, which effectively detaches solids. Backwashing with air and water is made feasible through the use of specially designed nozzles evenly distributed over the underdrain surface.

Easy to install, the heavy-duty underdrain system lends itself well to upgrading and retrofitting filtration plants.



Underdrain nozzles:

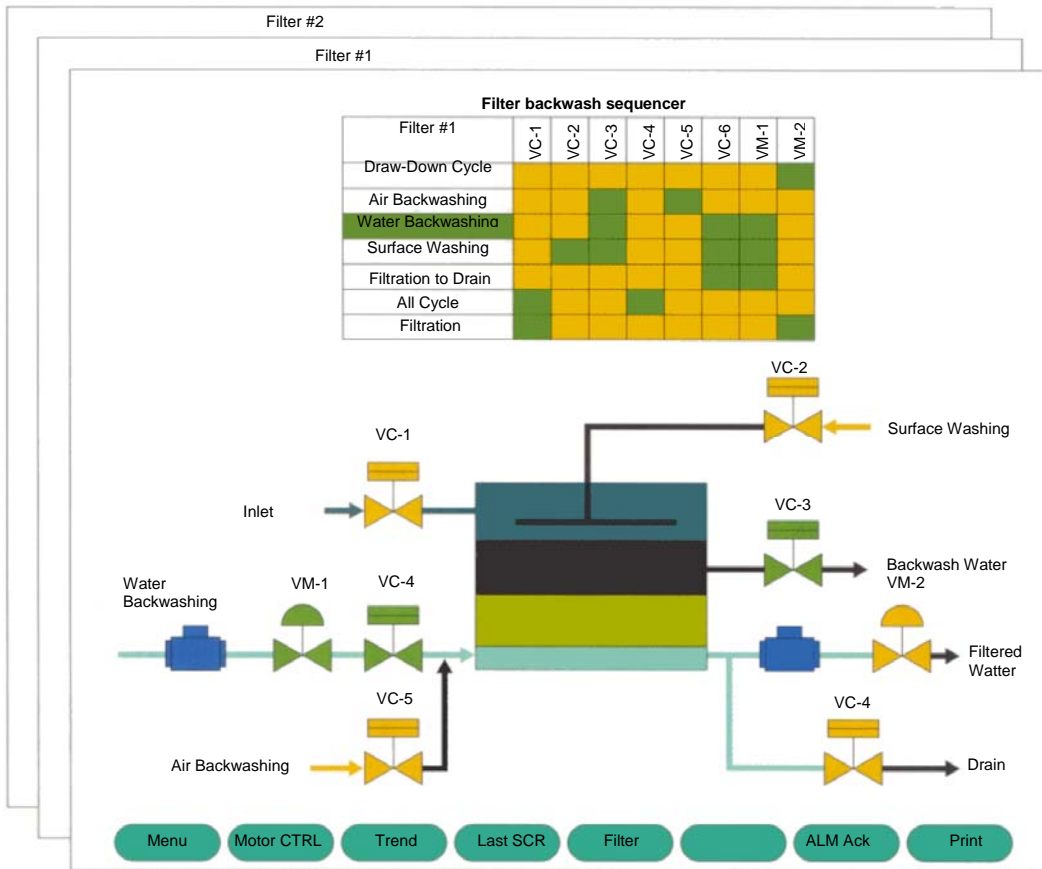
The underdrain nozzles are specially designed to allow backwashing with air and water. The nozzle slots are sized to prevent the escape of the media; the nozzle head is attached to a tube slotted at its lower section through which air is introduced. Depending on the media that is used, nozzles can be provided with slot openings ranging between 0.2 and 2.0 mm.

Surface washing:

During the backwash cycle, retained solids scoured from the media are directed to the backwash water gutter by a surface sweeping action of flushing water introduced from the clarifier. This feature eliminates the need for transversal collecting troughs.

CONTROL STRATEGIES

John Meunier Inc. provides a wide choice of controls to regulate filtration, cycle backwashing, measure turbidity, regulate chemical dosages, etc. From basic manual controls to the most sophisticated programmable logic controllers, **John Meunier Inc.** provides the appropriate controls for your system.



Coupled with the Actiflo[®] rapid settling process, the Dusenflo[®] filter completes a unique, very compact and highly effective potable water treatment train, which will provide consistent high quality, crystal clear water.

Ask for the Actiflo[®] brochure!



JOHN MEUNIER

Head Office

4105 Sartelon
 Saint-Laurent (Quebec) Canada H4S 2B3
 Tel.: 514-334-7230 www.johnmeunier.com
 Fax: 514-334-5070 sales@johnmeunier.com

Ontario Office

2000 Argenta Road, Plaza 4, Unit 430
 Mississauga (Ontario) Canada L5N 1W1
 Tel.: 905-286-4846 www.johnmeunier.com
 Fax: 905-286-0488 ontario@johnmeunier.com

